

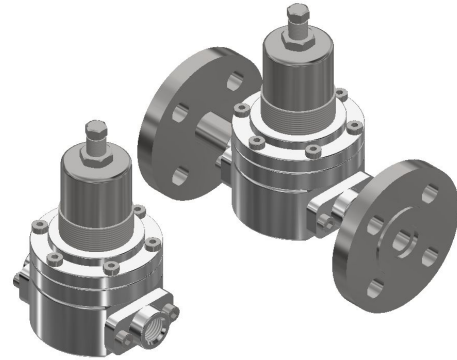
BP12CS2 Back pressure valve in AISI 316L



DESCRIPTION

Back pressure valves are the most appropriate solution to avoid possible failures and risks resulting from excess pressure in an installation. They discharge excess gas to the outside when the pressure at the control point exceeds the set pressure. Pressure is controlled by a piston, ensuring precision and repeatability of regulation. Body and inner parts are made of 316L stainless steel with excellent corrosion resistance. Panel mounting with bracket available. Degreased for oxygen use and pure gases versions available.

Applications: pneumatics, industry, pharmaceutical, chemical, oil & gas, energy and food.



TECHNICAL DATA

| | |
|-------------------------------|---|
| MAXIMUM INLET PRESSURE | Threaded version 60 bar Flanged version as per specific standard |
| IN/OUT CONNECTIONS | 1/4" • 3/8" • 1/2" (G-F / NPT-F) Flanged (UNI EN 1092-1 // ASME B16.5) Clamp (upon request) |
| SETTING RANGE | 0,3 → 3 bar • 0,8 → 8 bar • 1,5 → 15 bar 3 → 30 bar • 5 → 50 bar |
| MATERIAL | Body - AISI 316L Inner parts - AISI 316L |
| TEMPERATURE | -25°C → +200°C FPM -40°C → +175°C EPDM Other temperatures upon request |
| FLUIDS | Gases • Liquids |
| WEIGHT | 3,2 kg (threaded version) |
| CERTIFICATES | PED 2014/68/UE |
| ACCESSORIES | Bracket |
| SPARE PARTS KIT | Wear parts |

DIMENSIONAL DRAWINGS

