

CF12BS2 Filter in brass



DESCRIPTION

Coalescing filters are designed for the depuration of oily mists.

These filters use the physical principle of coalescence, that is, the phenomenon by which individual particles in a liquid, gaseous or solid state tend to join together to create a single mass. Aggregation results in the creation of heavy droplets that fall and split completely from the main fluid, which is then considerably purified.

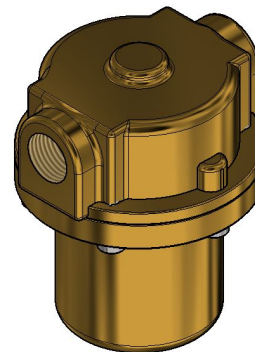
Cartridge is fully removable for inspection and thorough cleaning.

Body and inner parts are made of brass with excellent mechanical resistance.

Panel mounting with bracket available.

Degreased for oxygen use and pure gases versions available.

Applications: automotive, pneumatics and industry.



TECHNICAL DATA

MAXIMUM INLET PRESSURE	60 bar
IN/OUT CONNECTIONS	1/4" • 1/2" (G-F / NPT-F)
FILTRATION DEGREE	0,01µm
MATERIAL	Body - brass Inner parts - brass
TEMPERATURE	-20°C → +80°C Other temperatures upon request
FLUIDS	Gases
WEIGHT	2,2 kg
CERTIFICATES	PED 2014/68/UE
ACCESSORIES	Bracket
SPARE PARTS KIT	Wear parts

DIMENSIONAL DRAWINGS

