

F12BS2

Filter in brass



DESCRIPTION

In-line filters are designed to protect the most sensitive downstream control and regulation components. They trap impurities in the fluid thanks to 5 or 50 μm sintered filter elements.

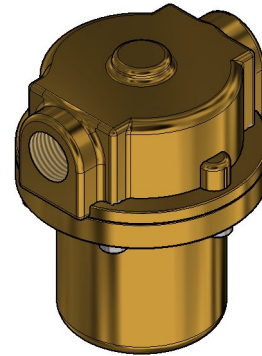
Cartridge is fully removable for inspection and thorough cleaning.

Body and inner parts are made of brass with excellent mechanical resistance.

Panel mounting with bracket available.

Degreased for oxygen use and pure gases versions available.

Applications: automotive, pneumatics and industry.



TECHNICAL DATA

MAXIMUM INLET PRESSURE	60 bar
IN/OUT CONNECTIONS	1/4" • 1/2" (G-F / NPT-F)
FILTRATION DEGREE	5 μm • 50 μm
MATERIAL	Body - brass Inner parts - brass
TEMPERATURE	-20°C → +80°C Other temperatures upon request
FLUIDS	Gases • Liquids
WEIGHT	2,2 kg
CERTIFICATES	PED 2014/68/UE
ACCESSORIES	Bracket
SPARE PARTS KIT	Wear parts

DIMENSIONAL DRAWINGS

