

# F12CS2

## Filter in AISI 316L



### DESCRIPTION

In-line filters are designed to protect the most sensitive downstream control and regulation components. They trap impurities in the fluid thanks to 5 or 50 µm sintered filter elements.

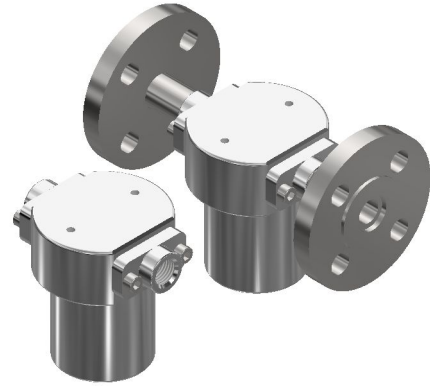
Cartridge is fully removable for inspection and thorough cleaning.

Body and inner parts are made of 316L stainless steel with excellent corrosion resistance.

Panel mounting with bracket available.

Degreased for oxygen use and pure gases versions available.

Applications: pneumatics, industry, pharmaceutical, chemical, oil & gas, energy and food.



### TECHNICAL DATA

<b>MAXIMUM INLET PRESSURE</b>	Threaded version 60 bar Flanged version as per specific standard
<b>IN/OUT CONNECTIONS</b>	1/4" • 3/8" • 1/2" (G-F / NPT-F) Flanged (UNI EN 1092-1 // ASME B16.5) Clamp (upon request)
<b>FILTRATION DEGREE</b>	5µm • 50µm
<b>MATERIAL</b>	Body - AISI 316L Inner parts - AISI 316L
<b>TEMPERATURE</b>	-25°C → +200°C FPM -40°C → +175°C EPDM Other temperatures upon request
<b>FLUIDS</b>	Gases • Liquids
<b>WEIGHT</b>	2,7 kg (threaded version)
<b>CERTIFICATES</b>	PED 2014/68/UE • ATEX 2014/34/EU
<b>ACCESSORIES</b>	Bracket
<b>SPARE PARTS KIT</b>	Wear parts

### DIMENSIONAL DRAWINGS

