

R12CS4

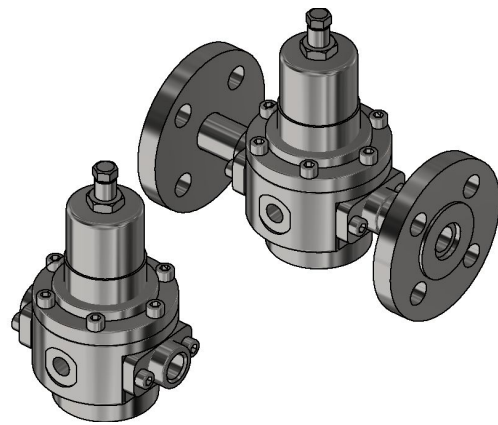
Precision pressure reducing valve in AISI 316L



DESCRIPTION

Precision pressure reducing valves are designed to handle applications that require accurate pressure control already at values close to 0 bar. Pressure is controlled by a diaphragm and a balanced shutter, ensuring precision and repeatability of regulation. Body and inner parts are made of 316L stainless steel with excellent corrosion resistance. Panel mounting with bracket available. Device can be supplied with relieving function. Degreased for oxygen use and pure gases versions available.

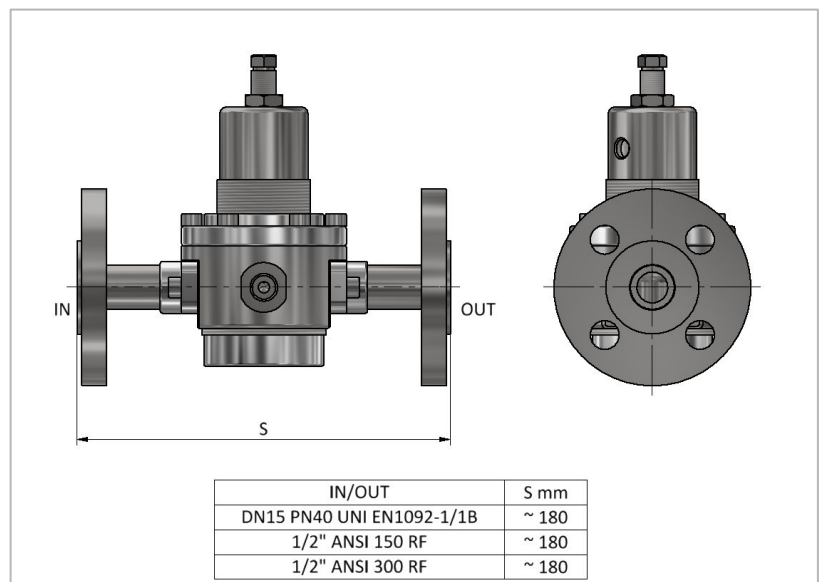
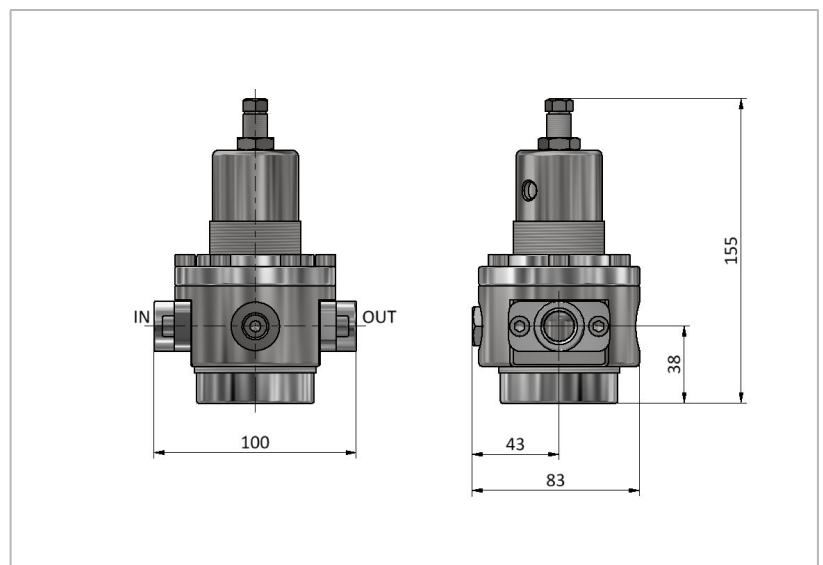
Applications: pneumatics, industry, pharmaceutical, chemical, oil & gas, energy and food.



TECHNICAL DATA

MAXIMUM INLET PRESSURE	Threaded version 15 bar Flanged version as per specific standard
SETTING RANGE	0,05 → 1,5 bar • 0,1 → 3 bar • 0,1 → 8 bar
IN/OUT CONNECTIONS	1/4" • 3/8" • 1/2" (G-F / NPT-F) Flanged (UNI EN 1092-1 // ASME B16.5) Clamp (upon request)
GAUGE CONNECTIONS	1/4" G-F
KV (CEI EN 60534-2)	1,5 m3/h
MATERIAL	Body - AISI 316L Inner parts - AISI 316L
TEMPERATURE	-25°C → +200°C FPM -40°C → +175°C EPDM Other temperatures upon request
FLUIDS	Gases • Liquids
WEIGHT	3,2 kg (threaded version)
CERTIFICATES	PED 2014/68/UE • ATEX 2014/34/EU
ACCESSORIES	Gauge • Bracket
SPARE PARTS KIT	Wear parts

DIMENSIONAL DRAWINGS



FLOW CHARTS

