

# OP12BS2 Gas point



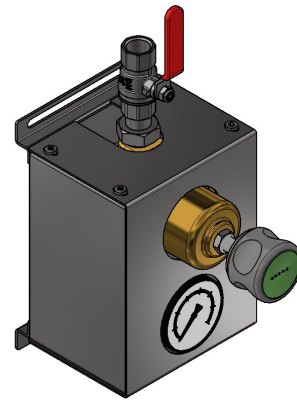
## DESCRIPTION

Gas points manage downstream pressure. They consist of a 2-way inlet ball valve, a pressure reducing valve and a gauge for reading the output value.

The components are integrated in an AISI 304 housing equipped with brackets for wall mounting. Pressure is controlled by a diaphragm or a piston, which guarantee precision and repeatability. Body and inner parts are made of brass with excellent mechanical resistance.

Degreased for oxygen use and pure gases versions available.

Applications: automotive, pneumatics, industry, welding and laser cutting.



## TECHNICAL DATA

<b>MAXIMUM INLET PRESSURE</b>	60 bar
<b>SETTING RANGE</b>	0,2 → 3 bar • 0,5 → 8 bar • 1,5 → 15 bar 2 → 30 bar • 3 → 50 bar
<b>IN/OUT CONNECTIONS</b>	1/4" • 1/2" (G-F)
<b>KV (CEI EN 60534-2)</b>	3,2 m3/h
<b>MATERIAL</b>	Body - brass Inner parts - brass
<b>TEMPERATURE</b>	-20°C → +80°C Other temperatures upon request
<b>FLUIDS</b>	Gases
<b>WEIGHT</b>	4 kg
<b>CERTIFICATES</b>	PED 2014/68/UE
<b>SPARE PARTS KIT</b>	Wear parts

## DIMENSIONAL DRAWINGS

